

## Test Report

No. RN12-10966.019 revision 1 Date : 07122012 Page 1 of 5

The present document voids and replaces any previously issued document of the same job reference. It must be destroyed or returned to the laboratory.

ARMOR INTERNATIONAL CODING & PRINTING  
7 RUE DE LA PELISSIERE  
44118 LE CHEVROLIERE  
FRANCE

The following sample(s) was/were submitted and identified by/on behalf of the client as:

SGS Job No. : RN12-10966.019 revision 1  
Client Reference : AXR 8  
Sample Receiving Date : 06112012  
Testing Period : 06112012- 06292012

Test Requested **With reference to RoHS Directive 2011/65/EC, and its amendment directives.**

Test Method : Please refer to next page(s).

Test Result(s) : Please refer to next page(s).

Conclusion : Based on the performed tests on submitted sample(s), the results are in compliance with the RoHS Directive 2011/65/EC and its subsequent amendments.

Signed for and on behalf of  
SGS MULTILAB



Name / Ms Delphine LECOQ  
Title : Customers Projects Manager



This Test Report is issued by the Company subject to its General Conditions of Service printed overleaf. Attention is drawn to the limitations of liability, indemnification and jurisdictional issues defined therein. The results shown in this test report refer only to the sample(s) tested unless otherwise stated. This Test Report cannot be reproduced, except in full, without prior written permission of the Company.

## Test Report

No. RN12-10966.019 revision 1 Date : 07122012 Page 2 of 5

The present document voids and replaces any previously issued document of the same job reference. It must be destroyed or returned to the laboratory.

Test result:

ID for sample 1 : AXR 8

### RoHS Directive 2011/65/EC

Test Item(s):	Unit	Test Method	Results	MQL	Limit
Cadmium(Cd)	mg/kg	IEC 62321:2008 (Ed. 12/2008) with modified digestion procedure, and performed by ICP-OES	<MQL	2	100
Lead (Pb)	mg/kg	IEC 62321:2008 (Ed. 12/2008) with modified digestion procedure, and performed by ICP-OES	<MQL	5	1000
Mercury (Hg)	mg/kg	IEC 62321:2008 (Ed. 12/2008) with modified digestion procedure, and performed by CV-AFS	<MQL	0.3	1000
Hexavalent Chromium (CrVI)	mg/kg	With reference to IEC 62321:2008, and calculated with the result of total Chromium, and performed by ICP-OES	<MQL	2	1000
Sum of PBBs	mg/kg	IEC 62321:2008 with modified extraction procedure, and performed by GC-MS	<MQL	75	1000
Monobromobiphenyl	mg/kg	IEC 62321:2008 with modified extraction procedure, and performed by GC-MS	<MQL	5	-
Dibromobiphenyl	mg/kg	IEC 62321:2008 with modified extraction procedure, and performed by GC-MS	<MQL	5	-
Tribromobiphenyl	mg/kg	IEC 62321:2008 with modified extraction procedure, and performed by GC-MS	<MQL	5	-
Tetrabromobiphenyl	mg/kg	IEC 62321:2008 with modified extraction procedure, and performed by GC-MS	<MQL	5	-
Pentabromobiphenyl	mg/kg	IEC 62321:2008 with modified extraction procedure, and performed by GC-MS	<MQL	5	-
Hexabromobiphenyl	mg/kg	IEC 62321:2008 with modified extraction procedure, and performed by GC-MS	<MQL	5	-
SUM of Heptabromobiphenyl, Octabromobiphenyl and Nonabromobiphenyl	mg/kg	IEC 62321:2008 with modified extraction procedure, and performed by GC-MS	<MQL	20	-
Decabromobiphenyl	mg/kg	IEC 62321:2008 with modified extraction procedure, and performed by GC-MS	<MQL	25	-

This Test Report is issued by the Company subject to its General Conditions of Service printed overleaf. Attention is drawn to the limitations of liability, indemnification and jurisdictional issues defined therein. The results shown in this test report refer only to the sample(s) tested unless otherwise stated. This Test Report cannot be reproduced, except in full, without prior written permission of the Company.

## Test Report

No. RN12-10966.019 revision 1 Date : 07122012 Page 3 of 5

The present document voids and replaces any previously issued document of the same job reference. It must be destroyed or returned to the laboratory.

Sum of PBDEs	mg/kg	IEC 62321:2008 with modified extraction procedure, and performed by GC-MS	<MQL	135	1000-
Monobromodiphenyl ether	mg/kg	IEC 62321:2008 with modified extraction procedure, and performed by GC-MS	<MQL	5	-
Dibromodiphenyl ether	mg/kg	IEC 62321:2008 with modified extraction procedure, and performed by GC-MS	<MQL	5	-
Tribromodiphenyl ether	mg/kg	IEC 62321:2008 with modified extraction procedure, and performed by GC-MS	<MQL	5	-
Tetrabromodiphenyl ether	mg/kg	IEC 62321:2008 with modified extraction procedure, and performed by GC-MS	<MQL	5	-
Pentabromodiphenyl ether	mg/kg	IEC 62321:2008 with modified extraction procedure, and performed by GC-MS	<MQL	5	-
Hexabromodiphenyl ether	mg/kg	IEC 62321:2008 with modified extraction procedure, and performed by GC-MS	<MQL	5	-
Heptabromodiphenyl ether	mg/kg	IEC 62321:2008 with modified extraction procedure, and performed by GC-MS	<MQL	5	-
Octabromodiphenyl ether	mg/kg	IEC 62321:2008 with modified extraction procedure, and performed by GC-MS	<MQL	25	-
Nonabromodiphenyl ether	mg/kg	IEC 62321:2008 with modified extraction procedure, and performed by GC-MS	<MQL	25	-
Decabromodiphenyl ether ##	mg/kg	IEC 62321:2008 with modified extraction procedure, and performed by GC-MS	<MQL	50	-

Note :

- (a) mg/kg = ppm ; 0.1wt% = 1000ppm
- (b) n.d.= not detected, than less than le limit of quantification
- (c) MQL = Method Quantification Limit
- (d) For corrosion protection coatings on metals: Information on storage conditions and production date of the tested sample is unavailable and thus results of Cr(VI) represent status of the sample at the time of testing represent status of the sample at the time of testing.
- (e) ## = The exemption of DecaBDE in polymeric application according 2005/717/EC was overruled by the European Court of Justice by its decision of 01.04.2008. Subsequently DecaBDE is included in the sum of PBDE after 01.07.2008
- (f) - = not regulated

This Test Report is issued by the Company subject to its General Conditions of Service printed overleaf. Attention is drawn to the limitations of liability, indemnification and jurisdictional issues defined therein. The results shown in this test report refer only to the sample(s) tested unless otherwise stated. This Test Report cannot be reproduced, except in full, without prior written permission of the Company.

## Test Report

No. RN12-10966.019 revision 1 Date : 07122012 Page 4 of 5

The present document voids and replaces any previously issued document of the same job reference. It must be destroyed or returned to the laboratory.

Sample photo :

Report No. RN12-10966.019



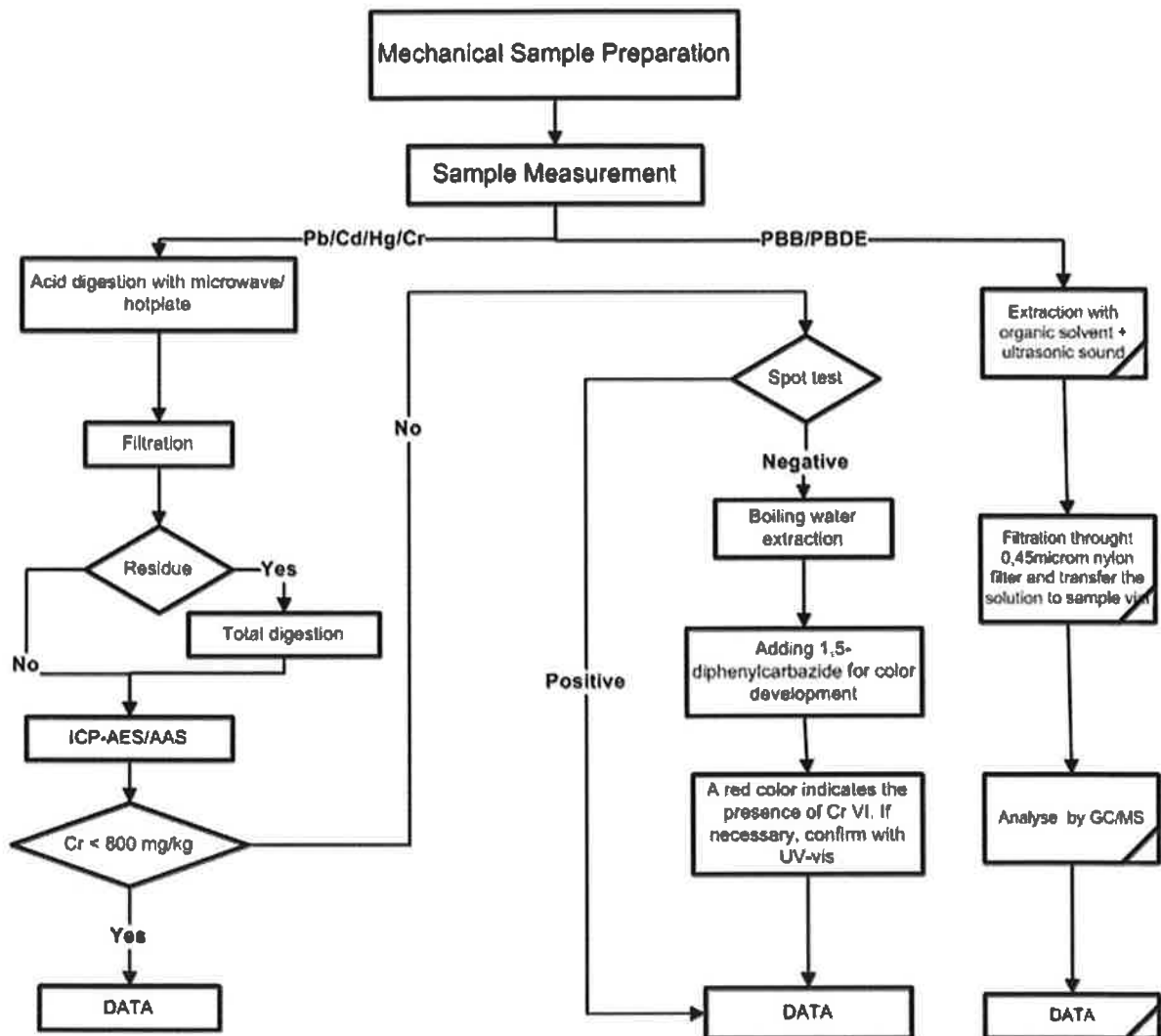
SGS authenticate the photo on original report only

This Test Report is issued by the Company subject to its General Conditions of Service printed overleaf. Attention is drawn to the limitations of liability, indemnification and jurisdictional issues defined therein. The results shown in this test report refer only to the sample(s) tested unless otherwise stated. This Test Report cannot be reproduced, except in full, without prior written permission of the Company.

## Test Report

No. RN12-10966.019 revision 1 Date : 07122012 Page 5 of 5

The present document voids and replaces any previously issued document of the same job reference. It must be destroyed or returned to the laboratory.



\*\*\* End of Report \*\*\*

This Test Report is issued by the Company subject to its General Conditions of Service printed overleaf. Attention is drawn to the limitations of liability, indemnification and jurisdictional issues defined therein. The results shown in this test report refer only to the sample(s) tested unless otherwise stated. This Test Report cannot be reproduced, except in full, without prior written permission of the Company.